



ORIENT EXPRESS is an **AUTHORIZED DYNOJET POWER COMMANDER TUNING LINK CENTER** selected by Dynojet. Using our in-house load control dyno, we are continuously developing and testing new combinations and creating maps. When you purchase a Power Commander from ORIENT EXPRESS, we'll ask about your bike's requirements (i.e. engine mods, pipes, air filters, etc.). Then we'll install either one of Dynojet's or our own custom maps for no additional charge. The Power Commander comes with software and a cable to connect to your PC; this allows you to make adjustments and optimize the fuel at all RPM and throttle positions for your motorcycle.



**Ignition Module**

Allows you to control and adjust your ignition timing. It connects to the PCIIIusb with its built-in expansion port link via a CAN interface. Its OEM plug-in connectors mean no cutting or splicing. "Direct coil driver technology" allows a high degree of timing adjustment. You can advance or retard the ignition curve up to 10° based on throttle position and RPM. You can also alter the timing for each cylinder. Dynojet recommends having your bike tuned at an Authorized Power Commander Tuning Center ([www.powercommander.com/centerbystate.shtml](http://www.powercommander.com/centerbystate.shtml)). REV Extension available for some models.



**Power Commander IIIusb**

The Power Commander IIIusb, introduced in 2003, utilizes the same "direct injector control" technology as the PCIII. The USB (Universal Serial Bus) port provides an instant, no-hassle way to connect the Power Commander module to a computer. This model also features an expansion port for add-on ignition modules.

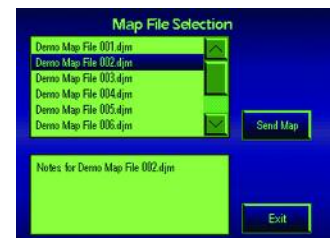
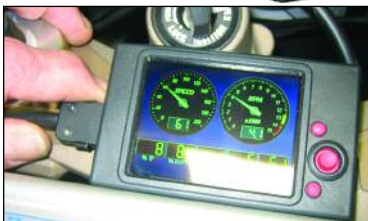
**Multi-Function Hub and LCD-100**

The Multi-Function Hub allows user to access advanced expansion features. Several optional harnesses are available to permit both input and output to/from the module.

- Hub Only.....**PWR HUB-001**
- Hub/Map Switch/Handle Bar Bracket.....**PWR HUB-002**
- Hub/Switch/Bracket/Gear Position-Speed/Pressure Input/Relay Harness...**PWR HUB-003**
- Liquid Crystal Display.....**PWR LCD-100**



**Accessories sold on page 31.**





**Quick Shifter**

Compatible with PCIIIusb and allow "full throttle, clutch-less" upshifts. Sensors are attached to the gear linkage and connect into the PCIIIusb expansion port. Sensors include a software utility which allows adjustment of "kill time" and "minimum RPM shift point". Linear sensors and handlebar switch are universal. Shift rod sensors require the gear linkage tie-rod to be modified. We have a range of universal tie-rods that are designed to give maximum adjustment, allowing a combination of different M6 right hand and left hand male and female threads over a wide range of 90mm to 280mm. Allow easy installation on many models as well as some custom rear-sets.

- Male/Female M6 Shift Rod C..... **PWR 32104030**
- Male/Male Shift Rod B..... **PWR 32104050**
- Female/Female Shift Rod A..... **PWR 32104060**
- Male/Female M8/M6 Shift Rod D..... **PWR 32105030**
- PCIIIusb Shift Rod Sensor-Pull..... **PWR 4-101**
- PCIIIusb Shift Rod Sensor-Push..... **PWR 4-102**
- PCIIIusb Linear Sensor-Pull..... **PWR 4-103**
- PCIIIusb Linear Sensor-Push..... **PWR 4-104**
- PCIIIusb H/Bar Button Switch..... **PWR 4-105**
- Dealer Universal Shift Rod Kit..... **PWR 4-106**
- PCIIIusb Tension Sensor-Pull..... **PWR 4-107**
- PCIIIusb Tension Sensor-Push..... **PWR 4-108**
- HD Softtail/Touring/Dyna..... **PWR 4-109**
- HD VRod..... **PWR 4-110**
- Universal Quickshift Harness..... **PWR 76911002**



Note: Use prefix **PWR** for power commanders.  
Use prefix **KNE** for filters.

**WIDE BAND COMMANDER**



**Wideband Commanders**

The ultimate tool for tuning any internal combustion engine—displays and records extremely precise "real time" air/fuel ratio utilizing a highly accurate, readily available Bosch LSU4 wideband sensor. Displays instant A/F ratio as well as data recording which can be played back through your computer. Or you can use your laptop to display and record in real time. Features multiple analog channels for data recording, modular programmable output for nitrous, water injection, timing retard... you name it. Also features a fully programmable warning light.

- Wideband Black/Silver..... **PWR 15-7001**
- Wideband White/Black..... **PWR 15-7002**



**PCIIIusb and Ign. Mods. and K&N Filters**

Model/Year	PCIIIusb	Ign. Mod.	Q/S & Rod	Filter
<b>Honda</b>				
FSC400 Silverwing 06-07.....	<b>131-411</b>			
Rancher 2007.....	<b>128-411</b>			
CBR600F4i 04-07.....	<b>108-411</b>	<b>6-12</b>	<b>4-102<sup>1xB</sup></b>	<b>HA6001</b>
CBR600RR 03-04.....	<b>115-411</b>	<b>6-04</b>	<b>4-102<sup>1xA</sup></b>	<b>HA6003</b>
CBR600RR 05-06.....	<b>117-411</b>	<b>6-04</b>	<b>4-102<sup>1xA</sup></b>	<b>HA6003</b>
CBR600RR 2007.....	<b>127-411</b>			
CBR600F 2007.....	<b>129-411</b>			
919 02-07.....	<b>112-411</b>			<b>HA9002</b>
CBR929RR 00-01.....	<b>104-411</b>	<b>6-09</b>	<b>4-102<sup>1xA</sup></b>	<b>HA9200</b>
CBR954RR 02-03.....	<b>110-411</b>	<b>6-09</b>	<b>4-102<sup>1xA</sup></b>	<b>HA9502</b>
CBR1000RR 04-05.....	<b>121-411</b>	<b>6-17</b>	<b>4-102<sup>1xA</sup></b>	<b>HA1004</b>
CBR1000RR 06-07.....	<b>125-411</b>	<b>6-17</b>	<b>4-102<sup>1xA</sup></b>	<b>HA1004</b>
CBF1000F 2007.....	<b>130-411</b>			
CBR1100XX 99-01.....	<b>102-411</b>			<b>HA1199</b>
CBR1100XX 02-03.....	<b>113-411</b>			<b>HA1199</b>
CB1300 03-06.....	<b>118-411</b>			<b>HA1301</b>
RC51 00-01.....	<b>105-411</b>		<b>4-104</b>	<b>HA5100</b>
RC51 02-05.....	<b>114-411</b>		<b>4-104</b>	<b>HA5100</b>
Rincon Quad 06-07.....	<b>124-411</b>			
VFR800 98-99.....	<b>101-411</b>			<b>HA8098</b>
VFR800 00-01.....	<b>106-411</b>			<b>HA8098</b>
VFR800 VTec 02-05.....	<b>111-411</b>			
VFR800 VTec 06-07.....	<b>126-411</b>			
VTX1800C 02-04.....	<b>109-411</b>	<b>6-08</b>		<b>HA1802</b>
VTX1800 Retro/Neo 03-06/C 05.....	<b>122-411</b>	<b>6-08</b>		<b>HA1802</b>
Varadero 1000 03-07.....	<b>116-411</b>		<b>4-104</b>	<b>HA1003</b>
Silverwing 03-06.....	<b>123-411</b>			
X11 00-04.....	<b>107-411</b>			
<b>Kawasaki</b>				
KFX450 2008.....	<b>226-411</b>			
Drifter 1500 99-05.....	<b>201-411</b>			<b>KA1596</b>

Model/Year	PCIIIusb	Ign. Mod.	Q/S & Rod	Filter
KLV1000 04-05.....	<b>217-411</b>			<b>SU1002</b>
Meanstreak 1500 02-03.....	<b>205-411</b>			<b>KA1596</b>
Meanstreak 1600 04-07.....	<b>215-411</b>			<b>KA1596</b>
Nomad 1500 00-04.....	<b>202-411</b>			<b>KA1596</b>
Nomad 1600 05-07.....	<b>220-411</b>			<b>KA1603</b>
Vulcan 900 06-07.....	<b>225-411</b>			
Vulcan 1500 Classic 00-07.....	<b>203-411</b>			<b>KA1596</b>
Vulcan 1600 Classic 03-07.....	<b>209-411</b>			<b>KA1603</b>
Vulcan 2000 04-07.....	<b>211-411</b>	<b>6-20</b>		
ZX6RR 2003.....	<b>208-411</b>	<b>6-05</b>	<b>4-102<sup>1xA</sup></b>	<b>KA6003</b>
ZX6R 03-04.....	<b>207-411</b>	<b>6-05</b>	<b>4-102<sup>1xA</sup></b>	<b>KA6003</b>
ZX6RR 2004.....	<b>213-411</b>	<b>6-05</b>	<b>4-102<sup>1xB</sup></b>	<b>KA6003</b>
ZX6R 05-06.....	<b>218-411</b>	<b>6-01</b>	<b>4-102<sup>1xB</sup></b>	<b>KA6005</b>
ZX6RR 05-06.....	<b>219-411</b>	<b>6-01</b>	<b>4-102<sup>1xB</sup></b>	<b>KA6005</b>
ZX6RR 2007.....	<b>229-411</b>			
EX650R 2007.....	<b>223-411</b>	<b>6-45</b>	<b>4-104</b>	
Z750 04-05.....	<b>214-411</b>	<b>6-18</b>	<b>4-104</b>	<b>KA1003</b>
Z750 S 05-06.....	<b>221-411</b>	<b>6-34</b>	<b>4-102<sup>1xB</sup></b>	<b>KA1003</b>
ZX10R 04-05.....	<b>212-411</b>	<b>6-21</b>	<b>4-102<sup>1xB</sup></b>	<b>KA1004</b>
ZX10R 06-07.....	<b>222-411</b>	<b>6-41</b>	<b>4-102<sup>1xA</sup></b>	<b>KA1004</b>
ZX12R 00-01.....	<b>204-411</b>	<b>6-11</b>	<b>4-102<sup>1xA</sup></b>	<b>KA1299-1</b>
ZX12R 02-03.....	<b>206-411</b>	<b>6-11</b>	<b>4-102<sup>1xA</sup></b>	<b>KA1299-1</b>
ZX12R 04-05.....	<b>216-411</b>	<b>6-22</b>	<b>4-102<sup>1xA</sup></b>	<b>KA1299-1</b>
ZX14R 06-07.....	<b>224-411</b>	<b>6-42</b>		
Z1000 03-06.....	<b>210-411</b>	<b>6-27</b>	<b>4-104</b>	<b>KA1003</b>
Z1000 2007.....	<b>227-411</b>			
ZG1400 Concours 2008.....	<b>230-411</b>			
<b>Suzuki</b>				
BLVD C50, C50SE & M50 05-07.....	<b>322-411</b>			<b>SU8001</b>
BLVD C90/C90SE 05-07.....	<b>323-411</b>			<b>SU1598</b>
Burgman 650 04-07.....	<b>331-411</b>			
DL650 VStrom 04-07.....	<b>319-411</b>			<b>SU1002</b>
DL1000 VStrom 02-07.....	<b>311-411</b>			<b>SU1002</b>
KingQuad 450 2007.....	<b>335-411</b>			



Note: Use prefix **PWR** for power commanders.  
Use prefix **KNE** for filters.

Model/Year	PCIIIusb	Ign. Mod.	Q/S & Rod	Filter
GSXR600 01-03	307-411	6-06	4-102 <sup>1xB</sup>	SU7500
GSXR600 04-05	316-411	6-05	4-102 <sup>1xB</sup>	SU7504
GSXR600 06-07	327-411	6-39	4-102 <sup>1xAC</sup>	SU7506
GSR600 06-07	332-411			
GSXR750 98-99	302-411			SU7596
GSXR750 00-01	305-411	6-36		SU7500
GSXR750 02-03	309-411	6-06	4-102 <sup>1xB</sup>	SU7500
GSXR750 04-05	317-411	6-03	4-102 <sup>1xB</sup>	SU7504
GSXR750 06-07	328-411	6-39		SU7506
GSXR1000 01-02	308-411	6-06	4-102 <sup>1xB</sup>	SU7500
GSXR1000 03-04	315-411	6-25	4-102 <sup>1xB</sup>	SU7500
GSXR1000 05-06	325-411	6-10	4-102 <sup>1xB</sup>	SU1005
GSXR1000 2007	333-411			
GSX1300R 99-00	304-411	6-29	4-104	SU1399
GSX1300R 2001	320-411	6-29	4-104	SU1399
GSX1300R 02-07	312-411	6-07	4-104	SU1399
GSX1400 02-07	310-411			SU1402
KingQuad 700 EFI ATV 05-07	321-411			
LTR450 06-07	329-411			
M109R 06-07	330-411			
Marauder 1600/M95 04-05	318-411			KA1596
SV650/650S 03-07	313-411	6-24	4-102 <sup>1xB</sup>	SU6503
SV1000 03-04	314-411	6-26	4-102 <sup>1xB</sup>	SU6503
SV1000 05-07	324-411	6-28		SU6503
TL1000S 97-01	301-411			SU0007A
TL1000R 98-03	303-411			SU0015
Bandit 1250 2007	334-411			
B King 2008	336-411			
<b>Yamaha</b>				
FJR1300 03-05	409-411			YA1301
FJR1300 06-07	419-411			
FZ1 Fazer 06-07	420-411	6-38	4-101 <sup>1xBC</sup>	
FZ6 Fazer 04-07	410-411		4-104	YA6004
Phazer (snowmobile) 2007	427-411			
MT01 05-07	414-411			YA1605
MT03 06-07	422-411			
Majesty 400 04-07	402-411			
Raptor 700 06-07	416-411		4-104	
RoadStar Warrior 02-07	403-411	6-33	4-102 <sup>1A2D</sup>	YA1602
Stratoliner/Roadliner 06-07	417-411	6-44		
TDM900 02-07	406-411			YA9002
TMAX500 04-07	404-411			YA5001
XT660R 04-07	412-411			YA6604
Grizzly 700 2007	425-411			
XV1300 2007	424-411			
YZFR1 02-03	405-411		4-101 <sup>1A2C</sup>	YA1002
YZFR1 04-05	411-411	6-02	4-101 <sup>1A2C</sup>	YA1004
YZFR1 2006	421-411	6-02	4-101 <sup>1A2C</sup>	YA1004
YZFR1 2007	426-411			
YZF600R6 2003	407-411		4-101 <sup>1xAD</sup>	YA6001
YZF600R6 2004	413-411		4-101 <sup>1xAD</sup>	YA6001
YZF600R6 2005, S 06-07	415-411		4-101 <sup>1xAD</sup>	YA6001
YZF600R6 06-07	418-411	6-37	4-101 <sup>1xAD</sup>	YA6001
Apex (snowmobile) 06-07	423-411			
<b>Triumph</b>				
Daytona 600 03-04	509-411		4-104	TB6000
Daytona 650 2005	511-411			
Daytona 675 2007	515-411			
Daytona 955I 99-01	501-411			TB9097
Daytona 955I 02-06	501-411			TB9002
Speed Triple 99-04	502-411		4-104	TB9097

Model/Year	PCIIIusb	Ign. Mod.	Q/S & Rod	Filter
Speed Triple 2007	517-411			
Sprint ST 99-00				TB9097
TT600 00-03	505-411			TB6000
Tiger 855 99-00				TB9097
Triumph Rocket III 04-07	510-411			TB2204
Triumph Speed Four 03-06	512-411			
Triumph Speed Triple 05-06	513-411			
Triumph Sprint ST 05-06	514-411			
Triumph Tiger 2007	516-411			
<b>Bombardier</b>				
Can Am Outlander 800 2006	615-411			
Can Am Outlander 650 06-07	620-411			
Can Am Outlander 500 2007	618-411			
Ski Doo Skandic Tundra 2007	619-411			
<b>Benelli / Ducati / Moto Guzzi / MV Agusta / MZ</b>				
Benelli TNT1130 05-07	726-411			
Tornado	728-411			
620 I.E. 03-06	719-411			DU9001
748 97-03	704-411			
749 03-06	715-411		4-104	
750/900 SS 1999	701-411			DU9098
750/900SS 00-01	702-411			DU9098
996 98-01	705-411			
998 02-03	711-411		4-104	
999 03-06	714-411		4-104	
1098 2007	729-411			
Monster S4 01-05	710-411			DU9001
Monster 800 03-04	716-411			DU9001
Monster 800 S2R 03-06	723-411			DU9001
Monster 900 00-01	703-411		4-102 <sup>1xA</sup>	DU9098
Monster 1000S 03-04	717-411			DU9001
Breva 750 04-05	722-411			
Breva 1100 04-05	724-411			
California Special 00-01	707-411			
Centuario 96-98	718-411			CG9002
Jackal/Bassa/Stone 00-03	708-411			
Quota 1100ES 00-01	709-411			
V11 Sport 00-01	706-411			CG9002
Brutale 04-05	712-411			
Brutale 910 06-07	727-411			
F4 02-06	713-411			
MV F4 1000 04-05	725-411		6-23	
MV F4 1000 06-07	730-411			
MZ 1000S 04-05	721-411			DU9001
<b>Harley Davidson</b>				
Dyna Models (O <sub>2</sub> Eliminator) 2006	811-511			
883 Sportsters	816-511			
1200 Sportsters	817-511			
EFI Dyna Models 04-05	810-511		4-109	RK3909
EFI Dyna Models 2007	814-511			
EFI Models 97-98	801-511		4-109	
EFI Softail Models 01-06	805-511		4-109	RK3909
EFI Softail Models 2007	813-511			
EFI Touring Models 99-01	802-511		4-109	RK3909
EFI Touring Models 02-06	807-511		4-109	RK3909
EFI Touring Models 2007	812-511			
VRod 02-06	809-511		4-110	RK3909
VRod 2007	815-511			
<b>Aprilia / BMW / Polaris</b>				
RSV Mille 00-03	902-411			AL1001
RSV Mille SP 00-01	903-411			AL1001

Model/Year	PCIIusb	Ign. Mod.	Q/S & Rod	Filter
Falco 01-04	905-411			AL1098
RST 1000 Futura 01-05	906-411			AL1098
RSV Mille 04-07	908-411	6-14	4-104	
Tuono 03-05	907-411	6-14	4-104	
Tuono 06-07	923-411			
Pegaso 650 06-07	926-411			
RXV/SXV450 06-07	927-411			
RXV/SXV550 06-07	929-411			
F650 00-04 Wideband	913-611			
K1200RS, GT 00-04 Wideband	914-611			BM1299
R1100 01-05 Wideband	916-611			
R1100S 97-04	920-611			BM1299
R1150R/RT 01-05 Wideband	918-611			BM0400
R1150GS 98-03	919-611			BM0400
700 Twin EFI ATV 2004	910-411			

Model/Year	PCIIusb	Ign. Mod.	Q/S & Rod	Filter
700 Twin EFI ATV 05-07	911-411			
800 Twin EFI ATV 05-07	912-411			
Polaris 500 EFI 06-07	922-411			
Ranger XP 06-07	924-411			
Victory V92C 99-01	901-411			PL1500
Victory V92SC 00-01	904-411			PL1500
Victory Hammer 05-06	921-411			
Victory Vegas 03-06	909-411			
<b>Arctic Cat</b>				
700 EFI Quad 06-07	616-411			
<b>KTM</b>				
Super Duke 2006	925-411			
Adventurer 2007	928-411			



**Oxygen Sensor Eliminator Kit**

When adding a Power Commander or replacing your stock exhaust system (on certain models) you need this O<sub>2</sub> Eliminator to turn off the Fuel Injection warning light on the dash.

Honda/Yamaha	PWR 76423005
CBR1000RR	PWR 76423008
Vulcan 2000	PWR 76423007
Buell	PWR 803-SEN

**Power Commander Accessories**



**Multi-Function Hub Accessories**

Switch Bracket Only for Hub	PWR 61329304
Boost Input Harness (Bare Ends)	PWR 76950012
Gear Position Harness Only for Hub	PWR 76950212
Switch and Harness Only for Hub	PWR 76950320
Boost Input Harness (G.M. 3 Bar Pressure Sensor)	PWR 76950325
Relay Harness Only for Hub	PWR 76950506

**Palm Adapter**

Free software available to send maps from the Palm Pilot to a Power Commander with Dynojet's adapter. It's been modified by Dynojet and can be used in conjunction with the Palm Cradle or a Palm "Hot Sync" Serial Cable....PWR 42907090



**Power Adapters**

These allow you to power up a Power Commander for changing or altering maps without being connected to the bike.

PCII/PCIII/PCIIIr 9v Battery Adapter	PWR 66116001
PCIIIusb 9v Battery Adapter	PWR 66116002
PCII/PCIII/PCIIIr 110v Adapter	PWR 76423001
PCII/PCIII/PCIIIr 220v Adapter	PWR 76423002



**DYNATEK**  
dyna performance electronics

**Dynatek FI Controller**

A plug in module that offers three user-selectable base fuel curves designed to improve engine operation. Can be modified to suit a variety of modifications. Adjustments are made via three potentiometers that adjust the fuel curve in the proper ranges from the application. Fuel mixture can be enriched or leaned. Uses the factory connectors for easy installation, plus no PC is required for tuning or adjusting the fuel curves. No modifications to the stock ECU, and removing the module returns the vehicle to the factory configuration.

Rincon 2006	DYN DFCA-1
LTR450 2006	DYN DFCA-2
KingQuad 700 05-06	DYN DFCA-3
Raptor 700I 2006	DYN DFCA-4
Outlander 800 2006	DYN DFCA-5
500 EFI 2006	DYN DFCA-6

700 Twin EFI 2004	DYN DFCA-7
700 Twin EFI 05-06	DYN DFCA-8
800 Twin EFI 05-06	DYN DFCA-9
VTX1800C/R/N 02-05	DYN DFCM-1
Vulcan 1500 99-05	DYN DFCM-2
Vulcan 1600 04-5/Marauder 1600 03-05	DYN DFCM-3
Vulcan 2000 04-05	DYN DFCM-4
C50/C50SE/M50 2005	DYN DFCM-5
C90 2005	DYN DFCM-6
XV1700 Warrior 02-05	DYN DFCM-7
Vulcan 1600 03-05	DYN DFCM-8
Silverwing 02-05	DYN DFCS-1
Majesty 400 04-05	DYN DFCS-2
TMAX500 04-05	DYN DFCS-3
XT600R 04-05	DYN DFCS-4





Note: Use prefix **DYJ** for jet kits.  
Use prefix **KNE** for filters.

### Stage 1 Kits

For motorcycles with a stock engine using the stock airbox, air filter, and stock or aftermarket pipe. Fully adjustable to allow the use of well-designed aftermarket pipes and stock replacement air filters like K&N. Designed to improve throttle response and driveability—in most cases, power increases of approximately 5% throughout the entire power range can be achieved.

### Stage 3 Kits

For motorcycles with stock or mildly tuned engines using well-designed individual air filters and a stock or aftermarket pipe. In most cases, power increases of 10% to 15% can be achieved. However, driveability may be compromised particularly with short stroke high RPM motors. Note: on some modern engine and airbox designs, individual filters and proper jetting offer no performance improvement, yet compromise driveability. In such cases Stage 3 kits are not available.

### CARBURETOR JET KITS

Dynojet kits increase power and smoothness throughout the entire rev range, while maintaining optimum fuel economy. Dynojet offers a wide range of kits to fit any application.



### K&N FILTERS

Stock air filters do a great job of blocking dirt from entering your engine, but they also restrict the air which can rob horsepower. K&N air filters do as good a job of blocking dirt as the stock filter, but with increased airflow which equals more horsepower. You get increased horsepower, fully cleanable filter, and the famous K&N "Million Mile Warranty".

## Dynojet Jet Kits and K&N Filters

Honda	Stage 1	Repl. Filter	Stage 2	Stage 3	Univ. Filter
XR250L 91-99.....	1143	HA1312			
CRF250X 05-06.....	1171				* Stage 7 Kit
TRX300EX 93-02.....	Q101	HA3094			** Stage 1&2 included in kit
TRX400EX 99-02.....	Q107	HA4099			*** Stage 1&3 included in kit
CRF450X 05-06.....	1172				
VF500C V30 Magna 84.....	1120	HA5010			
VF500F Interceptor 84.....	1109	HA3084			
VF500F Interceptor 85.....	1117	HA3084			
VF500F Interceptor 86.....	1125	HA3084			
VT500C Shadow 83-85.....	1114	HA5083			
CBR600F 87-89.....	1122	HA6087	1122		RC0844
CBR600F 90.....	1135	HA6087	1135		
CBR600F2 91-94.....	1140	HA6091		1740*	
CBR600F3 95-98.....	1157	HA6095			
CBR600F3 97-98.....	1189	HA6095			
CBR600F4 99-00.....	1196	HA6099			
VT600C Shadow VLX 94-98.....	1145	HA6088			
VT600C Shadow VLX 99-06.....	1197				
XL600 83-87.....			1330		
XL600V Transalp 89-90.....	1138	HA6089			
XL650 Transalp 01-04.....		HA6501			
CB650C 80-82.....	1131	HA7580		1131	RC2362
CB650SC Nighthawk 83-85.....	1106	HA5583			
NT650 Hawk GT 88-92.....	1137	HA0005		1737*	
XR650L 93-06.....	1148	HA6592			
CB700SC Nighthawk S 84-86.....	1107	HA7084	1107		
VF700C Magna 84-86.....	1119	HA1210			
VF700S Sabre 84-85.....	1112				
VFR700F Interceptor 86-87.....	1108	HA7587			
VT700C Shadow 84-85.....	1101	HA1326			
CB750 (all models) 69-78.....		HA0100			RC2314
CB750 F Super Sport 76-79.....		HA0100			RC2314
CB750 F Super Sport 79-82.....	1127	HA1079		1127	RC0984
CB750 Nighthawk 91-02.....	1142	HA7591			
CB750C Custom 80-82.....	1127	HA1079		1127	RC0984
VF750C Magna 82-86.....	1119	HA1210			
VF750C Magna 94-04.....	1167	HA7594			
VF750F V45 Interceptor 83-84.....	1108	HA1245			
VF750S Sabre 82-83.....	1112				
VFR750F Interceptor 86-87.....	1124	HA7587	1224		
VFR750F Interceptor 90-93.....	1139	HA0003			
VFR750F Interceptor 94-97.....	1159	HA0003			
VT750C Shadow 83-85.....	1101	HA1326			RC0982
VT750C Shadow ACE/ Deluxe 98-03.....	1183	HA7500			
VT750DC Shadow Spirit 01-02.....	1184	HA7500			
VFR800F Interceptor 98-06.....		HA8098			
CB900C 80-82.....	1127	HA1079		1127	RC0984
CBR900RR 93-95.....	1146	HA9092A		1746*	
CBR900RR 96-97.....	1170	HA9092A			
CBR900RR 98-99.....	1178	HA9092A			
CB1000 Big One 93-95.....	1154	HA1013			
CBR1000F 87-91.....	1126	HA1087			
CBR1000F 93-95.....	1153	HA1087			
VF1000F 84-86.....	1121	HA1250			
VTR1000 Super Hawk 97-05.....	1185	HA0011			
CBX1000 78-79.....	1110	HA0900			
CBX1000 80-82.....	1118	HA0900		1318	
1100 Classic 94-01.....	1168	HA1187			
VTX1300 03-06.....	1192	HA1330			
1100 Shadow ACE 99-01.....	1191	HA1187			
1100 Shadow Sabre 00-06.....	1186	HA1187			
1100C Shadow 85-86.....	1116	HA1187			

Honda	Stage 1	Repl. Filter	Stage 2	Stage 3	Univ. Filter
1100C Shadow 87-89		HA1187			
1100C Shadow 90-01	1152	HA1187			
Shadow ACE 94-01	1168	HA1187			
1100C3 Shadow Aero 98-02	1190	HA1187			
CB1100F 83	1105	HA1079	1305		RC0984
CBR1100XX Blackbird 97-98	1175	HA1197			
VF1100C V65 Magna 83-84	1104	HA6583			
VF1100C V65 Magna 86	1133	HA6583			
ST1100 91-02		HA1191			
VT1100 Shadow Touring 97		HA1187			
VT1100 Shadow Tour. 98-01	1191	HA1187			
VT1100 Shadow Spirit 98-02	1188	HA1187			
GL1500 Valkyrie 97-02	1166	HA1596			
ST1300		HA1302			



Note: Use prefix **DYJ** for jet kits.  
Use prefix **KNE** for filters.

Kawasaki	Stage 1	Repl. Filter	Stage 2	Stage 3	Univ. Filter
250 Mojave ATV 01	Q201	KA2587			
EX250R Ninja 86-87	2117	KA2586		2117	RC1822
EX250R Ninja 88-06	2138	KA2586		2138	RC1822
KL250 Super Sherpa 00-02			2263		
KX250R 2007	2113				
KLX300 97-06		KA1287	2206		
KX450F 2007	2114				
EN500 Vulcan LTD 91-05	2128	KA5096			
EX500 87-02	2128**	KA5087		2128*	RC0982
KZ550 GPZ 84-86	2112	KA0850		2112	RC1824
KZ550 H GP 82-83	2107	KA1700		2107	RC1824
Zephyr 550 90-96	2110	KA0850			
ZL600 Eliminator 86-87	2109			2109	RC1824
ZL600 Eliminator 96-97	2165			2165	RC1824
ZX6R 95-97	2159	KA6095			
ZX6R 98-99	2189	KA6098			
ZX6R 00-02	2188	KA6098			
ZX600 A Ninja 86-87	2122	KA0850	2122	2122	RC1824
ZX600 C Ninja 88-97	2129	KA7587		2329	RC1824
ZX600 D (ZX6) 90-95	2142				
ZX6E 93-04	2153	KA6093			
KLR650 87-06	2144	KA6589	2144		
KLX650 C1 93-96		KA6589	2264		
KLX650R 93-97		KA1287	2250		
KZ650 All 77-80		KA1200		2306	RC2314
Zephyr 750 91-93	2146	KA0850	2146		
ZR7 00-01	2174	KA0850			
ZX750 F1 Ninja 87-89	2126	KA7587	2126	2126	RC2914
ZX7 H1 Ninja 89	2140	KA7589	2241		
ZX7 H2 Ninja 90	2141	KA7589			
ZX7 H2 Ninja (High Alt) 90	2141HA	KA7589			
ZX7 J1 Ninja 91-92	2145				
ZX7 Ninja 93-95	2154	KA0007			
ZX7R Ninja 96-03	2170	KA7596			
VN800 Vulcan 95-04	2147	KA8095			
VN800 Vulcan Drifter 00-06	2186	KA8095			
ZL900 Eliminator 85-86	2137	KA9084		2137	RC2774
ZX900 A1 Ninja 84-86	2108	KA9084		2108	RC2814
ZX9R B1 Ninja 94-97	2155	KA9094			
ZX9R C1 Ninja 98-99	2185	KA9098			
ZX9R Ninja 00-01	2191	KA9098			
KZ1000 A, LTD, Police, Z1-R 77-80		KA8077		2304	RC2454
KZ1000 J 81-83	2134	KA1600		2134	RC0984
KZ1000 K LTD/CSR 81-82		KA1600		2301	RC0984
ZG1000 Concours 86-88	2124	KA9084		2124	RC1824
ZG1000 Concours 90-02	2125	KA9084			RC1824

Kawasaki	Stage 1	Repl. Filter	Stage 2	Stage 3	Univ. Filter
ZL1000 Eliminator 87	2139	KA9084		2139	RC0984
ZX1000R Ninja 86-87	2121	KA0002		2321	RU2852
ZX1000 B1 Ninja (ZX10) 88-90	2132**	KA1088		2132*	RU2952
KZ1100 L1 LTD 83		KA1600		2310	RC0984
KZ1100D Spectre 82-83		KA1600		2310	RC0984
ZN1100 B1 LTD 84-85					RC0984
ZR1100 A1 92-95	2148	KA1192			
ZRX1100 99-00	2179	KA1199		2179	RC0984
ZX1100 E1 GPz 95-97	2157				
ZX11C1 Ninja 90-93	2143	KA0004			
ZX11D Ninja 93-97	2151	KA1093			
ZX11D Ninja 98-01	2190				
ZRX1200 01-02	2195	KA1199			
ZZR1200 02-05	2198	KA1093			
KZ1300 79-82	2130	KA1350			
VN1500 Drifter 99-05		KA1596			
VN1500 Nomad 98-03	2169	KA1596			
VN1500 Vulcan 87-90		KA1594			
VN1500 Vulcan 91-02	2131	KA1594			
VN1500 Vulcan 88 SE 87-89		KA1594			
VN1500 Vulcan Classic 96-05	2167	KA1596			



Suzuki	Stage 1	Repl. Filter	Stage 2	Stage 3	Univ. Filter
RMZ250 2007	3117				
GSF400 Bandit 91-93	3134	SU0008			
GS450 ED, GAD, LD, TXD 83	3113			3113	RC0982
RMZ450 2007	3119				
GS500E 90-02	3128	SU5589		3128	RU2970
GSF600S Bandit 00-03	3190				
GSF600S Bandit 96-99	3120	SU7593			
GSX600F Katana 90-97	3131	SU7592		3131	RU2922
GSX600F Katana 98-05	3159	SU7592			RU2922
GSX600F Katana 88-89	3121	SU7592		3321	RC1824
GSXR600 97	3155	SU7596			* Stage 7 Kit
GSXR600 98	3160	SU7596			** Stage 1&2 included in kit
GSXR600 99-00	3163	SU7596			*** Stage 1&3 included in kit
GSXR600 92-95	3140	SU7593			
RF600R 94-96	3146	SU9094			
DR650 S 90-95	3138	SU6590	3138		
DR650 S 96-02		SU6596	3138		
GS650 EX 81-82		SU5500		3310	RC2382
LS650 Savage 00-06	3107				
SV650 99-02	3171	SU6599			
GS700 80-85	3125	SU7503		3125	RC0984
GS750 80-85	3102	SU1250		3102	RC0984
GSX750F Katana 89-97	3130	SU7592		3130	RU2922
GSX750F Katana 98-05	3158	SU7592			RU2922
GSXR750R 86	3118	SU7586		3118	RC1824
GSXR750 87	3116	SU7586		3116	RC1824
GSXR750 88-89	3122	SU7588		3122	RU2922
GSXR750 90-92	3135	SU7588		3135	RU2922
GSXR750W 93-95	3139	SU7593			
GSXR750 SRAD 96-99	3149	SU7596			
GS850 (8V) 80-83		SU1200		3306	RC0984
VL800 Volusia 01-04	3195	SU8001			
VS800GL Intruder 96-02	3147				
VZ800 Marauder 97-04	3143	SU5589		3243	
RF900R 94-97	3152	SU9094			
GS1000 (8V) 78-79		SU1250		3304	RC2454
GS1000 (8V) 80-81	3103	SU1250		3103	RC2454
TL1000R 98-03		SU0015			
GS1100 (16V) 80-82	3133	SU1200		3133	RC0984

# Dynojet

Suzuki	Stage 1	Repl. Filter	Stage 2	Stage 3	Univ. Filter
GS1100 (8V) 82-83.....	5103	SU1200			RC0984
G SX1100F Katana 88-93.....	5123	SU7592		5323	RC1824
G SX1100G 91-93.....	5142	SU1191			
G SXR1100 86-88.....	5123	SU7586		5323	RC1824
G SXR1100 89-92.....	5136	SU7588		5136	RU2922
G SXR1100W 93-94.....	5145	SU7593			
G SXR1100W 94-95.....	5144	SU7593			
GS1150E 83-86.....	5133	SU1284		5133	RC0984
GSF1200 Bandit 97-00.....	5154	SU7593		5154	RU2922
GSF1200 Bandit 01-02.....	5151	SU6000			
V S1400 GLP Intruder 87-02.....	5126	SU1487			
V L1500 LC Intruder 98-04.....	5161	SU1598			

Yamaha	Stage 1	Repl. Filter	Stage 2	Stage 3	Univ. Filter
YSR50 87-92.....			4223		YA0587
YZ250FF.....	4120				
350 Banshee ATV 87-01.....	4320	YA3502			
RZ350 84-85.....				4504	RC2452
FZR400 US only 88-90.....	4126	YA4085		4126	RC1824
535 Virago 93-00.....	4131				
XJ550 Maxim/Seca 81-83.....	4106	YA1600		4106	RC2372
XJ600 Seca II 92-98.....	4138	YA6092		4138	RC1824
FJ600 84-85.....	4107	YA1684		4107	RC1824
FZ600 86-88.....	4115	YA1686		4115	RC1824
FZR600 89-00.....	4129***	YA6089		4129	RU2852
SRX600 86.....		YA6050	4518		
YX600 Radian 86-90.....	4111	YA1600		4111	RC1824
YZF600R 94-96.....	4142	YA6094			
YZF600R 97-06.....	4145	YA6096		4745*	
YZFR6 99-00.....	4161	YA6001			
YZFR6 01-02.....	4163	YA6099			
650 V-Star 98-02.....	4168	YA6598			
XJ650 Maxim 80-82.....	4103	YA1650		4103	RC1824
FZ700 Genesis 86-87.....	4110	YA7585		4110	RU2754
FZX700 Fazer 86-87.....	4110	YA7086		4110	RC1824
XJ700 Maxim 85-86.....		YA7080		4502	RC1824
XV700 Virago 84-87.....		YA1186			
FZ750 N 85-88.....	4110	YA7585		4110	RU2754
XJ750R Seca 81-82.....	4102	YA1650		4102	RC1824
XV750 Virago 81-83.....	4113	YA1550			
XV750 Virago 88-00.....	4128	YA1186			
YZF750R 94-96.....	4146	YA7593		4146	RU3092
YZF750R 97-98.....	4156	YA7593		4156	RU3092
XJ900R Seca 83.....	4108	YA9083		4108	RC1824
XV920 Virago 81-83.....	4113	YA1550			
FZ1 01-05.....	4170	YA1001			
FZR1000 87-88.....	4122	YA7585		4522	RC2814
FZR1000 89-95.....	4133	YA1089		4133	RU3092
XV1000 Virago 84-85.....	4114	YA1186			
YZF1000 RJ 97.....	4147	YA1089			RU3092
YZF1000R1 98-99.....	4164	YA1098			
YZF1000R1 00-01.....	4165	YA1098			
FJ1100 84.....	4105	YA1184		4105	RC2814
FJ1100 85.....	4109	YA1184		4109	RC2814
VStar1100 99-04.....	4182	YA1199			
XS1100 78-79.....	4124	YA1400		4124	RC0984
XS1100 80-83.....	4101	YA1400		4101	RC0984
XV1100 Virago 84-87.....	4114	YA1186			
FJ1200 86-93.....	4170	YA1184		4170	RC2814
VMax 85-04.....	4116	YA1285		4176	RU2989
1300 Royal Star Venture 99-02.....		YA1399			

Yamaha	Stage 1	Repl. Filter	Stage 2	Stage 3	Univ. Filter
Royal Star 96-01.....	4148	YA1595			
Road Star 1600 99-03.....	4175	YA1699		4175	RK3905+
Road Star 1700 04-06.....	4176	YA1704			+ (Bolt-On)

Honda ATV	Stage 1	Repl. Filter	Stage 2	Stage 3
TRX300EX 92-05.....	Q101	HA3094	Q101	
Fourtrax 300FW 92-02.....	Q103			
400 Foreman 96-02.....	Q104			
Recon 250D 97-05.....	Q105			
450 Foreman 98-04.....	Q106			
TRX400EX 99-05.....	Q107	HA4099	Q107	
Rancher 350 4x4 00-05.....	Q108		Q108	
Rubicon 500 4x4.....	Q109		Q109	
250EX 01-05.....	Q110		Q110	
TRX650 Rincon 03-05.....	Q112			
TRX450 04-05.....	Q113		Q113	
400 Rancher 04-05.....	Q114			
Foreman 500 2005.....	Q115			
Rubicon 500 4x4.....	Q116			
250EX 2006.....	Q117		Q117	
TRX450 2006.....			Q118	

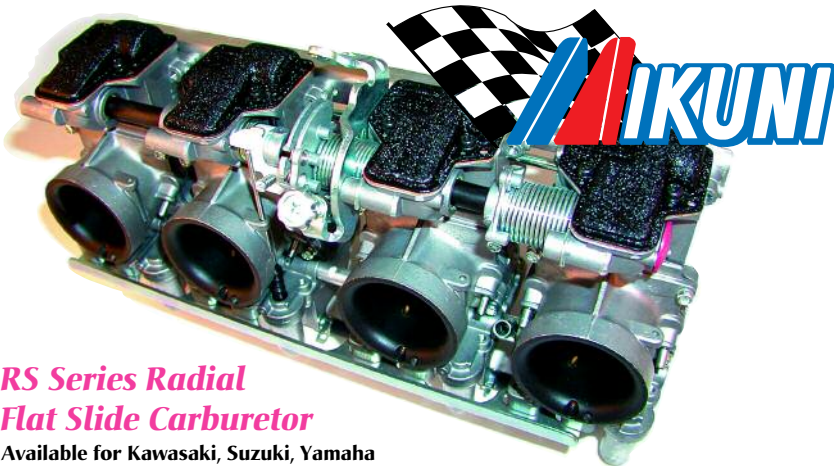
Note: Use prefix **DYJ** for jet kits.  
Use prefix **KNE** for filters.  
\* Stage 7 Kit  
\*\* Stage 1&2  
\*\*\* Stage 1&3

Kawasaki ATV	Stage 1	Repl. Filter	Stage 2	Stage 3
KSF250 Mojave 87-04.....	Q201	KA2587		
300 Lakota 95-04.....	Q202			
300 Bayou 2x4 91-04.....	Q203			
300 Bayou 4x4 91-04.....	Q205			
KVF360 Prairie 02-06.....	Q211			
250 Bayou 02-06.....	Q212			
KFX400 03-04.....	Q213			
KFX700 03-06.....	Q214			
700 Prairie 04-06.....	Q216			
750 Brute Force 05-06.....	Q217			
KFX400 05-06.....	Q218		Q218	
650 Brute Force 05-06.....	Q219			



Suzuki ATV	Stage 1	Repl. Filter	Stage 2	Stage 3
Eiger 400 Auto 02-06.....	Q509			
Eiger 400 Std. 02-06.....	Q510			
Vinson 500 02-06.....	Q511			
Z400 QuadSport 03-04.....	Q512		Q512	
LTZ250 03-06.....	Q514			
Twinpeaks LTV700F 04-05.....	Q515			
LTZ400 05-06.....	Q516		Q516	
<b>Yamaha ATV</b>				
YZF350 Banshee 87-06.....			Q400	
YFM350 Wolverine 96-05.....	Q403			
YFM350X Warrior 93-04.....	Q406	YA4350	Q406	
YFM600 Grizzly 98-01.....	Q407			
YFM400 Kodiak Auto 00-06.....	Q412			
YFM400 Big Bear 00-06.....	Q413			
YFM660R Raptor 01-05.....	Q414	YA6601		
YFM660 Grizzly 02-06.....	Q415			
YSF200 Blaster 88-06.....	Q419		Q419	
450 Kodiak Auto 4x4 03-06.....	Q420			
YFZ450 04-05.....	Q421		Q421	
350 Raptor 04-06.....	Q423		Q423	
250 Bruin 05-06.....	Q424			
YXR660 Rhino 04-06.....	Q425			
450 Wolverine 4x4 2006.....	Q426			
YFZ450 2006.....	Q427		Q427	
YZF350 Banshee 87-06.....				Q4320
<b>Polaris ATV</b>				
Sportsman 500 99-00.....	Q503			
Magnum 500 99-02.....	Q506			
Sportsman 500 H.O. 01-06.....	Q513			
Predator 500 03-07.....	Q518			





### RS Series Radial Flat Slide Carburetor

Available for Kawasaki, Suzuki, Yamaha

From pro stock racers to everyday street bikes, Mikuni offers a carburetor set engineered for maximum performance and efficiency. Mikuni Radial Flat Slide racing carburetors are the answer for today's high-technology, high-velocity 4-valve-per-cylinder motorcycle engines. With high port velocity, larger carburetor venturis can be used. The built-in accelerator pump gives instant throttle response. Horsepower advantages can only be rivaled by very expensive one-off type race-only carburetors. Idle and choke circuits allow these carburetors to be street driven daily without any problems.

	34mm	36mm	38mm	40mm
Kaw750 (all).....	MIK 3400-D21	MIK 3600-0D3		
Kaw KZ900/1000/1100.....	MIK 3400-D21	MIK 3600-0D3	MIK 3800-D19	MIK 4000-0D1
Kaw Ninja 1000 86-87.....		MIK 3600-0D8	MIK 3800-D35	MIK 4000-D12
Kaw Ninja 900 (all).....		MIK 3600-0D8	MIK 3800-D19	MIK 4000-0D1
Suz GS750/GS1000.....	MIK 3400-D21	MIK 3600-0D3	MIK 3800-D19	MIK 4000-0D1
Suz GS1100/1150.....	MIK 3400-D21	MIK 3600-0D3	MIK 3800-D19	MIK 4000-0D1
Suz GSXR750 86-92.....	MIK 3400-D21	MIK 3600-0D3	MIK 3800-D19	MIK 4000-0D1
Suz GSX600 (all).....	MIK 3400-D21	MIK 3600-0D3	MIK 3800-D19	MIK 4000-0D1
Suz GSXR1100 86-92.....	MIK 3400-D21	MIK 3600-0D3	MIK 3800-D19	MIK 4000-0D1
Yam FJ1100/FJ1200 (all).....		MIK 3600-0D8	MIK 3800-D35	MIK 4000-D12

### Velocity Stacks

Direct replacement for improved horsepower and power curve.

ZX10R 04-05.....	FAC VEL-K95-1560
ZX12 00-03 low profile.....	MUZ 0049-00005
ZX12 nitrous stacks.....	MUZ 0049-00002
GSXR600 2006.....	FAC VEL-S64-1545
GSXR1000 01-06.....	FAC VEL-S51-6060
GSX1300R.....	FAC VEL-S89-8080
R6 03-05.....	FAC VEL-Y80-XS
R1 04-06.....	FAC VEL-Y77-8989

### Orient Express Road Star Mikuni Carb Kit

Wake up your Road Star with our Mikuni HSR carburetor and ported intake manifold kit. This combination has netted gains of 10-12 hp. We offer these kits with 42mm, 45mm and 48mm Mikuni HSR carbs. Call and speak to one of our sales staff to help you choose the right package for your bike. Kit comes complete with carburetor, cables, and ported intake manifold.

- Road Star Carb Kit 42mm **MIK XV16-42**
- Road Star Carb Kit 45mm **MIK XV16-45**
- Road Star Carb Kit 48mm **MIK XV16-48**

### Ported Intake Manifolds

Ported and ready to ship.

- Road Star.....**OER XV16-142**
- Warrior.....**OER XV17-142**



### Mikuni HSR Carburetors

Mikuni's HSR42, HSR45 and HSR48 carburetors are the finest motorcycle carburetors made today. They give superb throttle response and deliver all the air flow needed for any level of performance, be it V-twin cruiser or turbo application. Choke cable included.

- 42mm.....**MIK HSR42**
- 45mm.....**MIK HSR45**
- 48mm.....**MIK HSR48**



### Carburetor Synchronizer

The ORIENT EXPRESS synchronizer makes the normally tedious job of carburetor synchronization a five-minute task. The meter will fit all motorcycle carburetors with or without stacks and it fits easily into your tool box. The increased throttle response you will experience after synchronizing your carburetors will make you a believer. **OER 3100-004**

### Mikuni Velocity Stacks

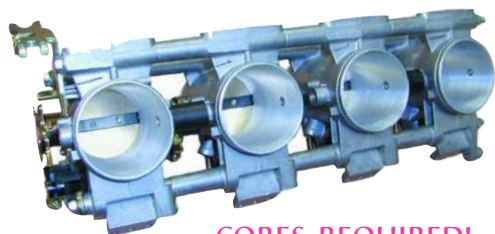
Aluminum stacks designed for use with the "ultimate carbs." MIKUNI RS Series radial flat slide carbs are capable of pure racing performance. When properly tuned with the addition of velocity stacks air flow is maximized.

- 15mm.....**MIK 3600-015**
- 30mm.....**MIK 3600-030**
- 50mm.....**MIK 3600-050**



### Kawasaki Adapter Manifolds for Mikuni Carburetors

RS 34mm, 36mm, 38mm, 40mm to Z1-GPZ Cyl. Head **MIK 2908-003**



**CORES REQUIRED!**

### Orient Express Big Bore Throttle Body Conversion

2mm overbored and tapered throttle bodies for improved power. Cores required.

- Ninja 650.....**OER ER6N-500**
- ZX12.....**OER ZX12-500**
- GSXR1000.....**OER GX10-500**
- GSXR1300R.....**OER 1300-500**



**CORES  
REQUIRED!**

### XV17 42mm Conversion

A must for modified Warriors! Our 42mm conversion includes 2mm oversize throttle plates and bored/tapered throttle bodies. You'll see up to 5hp gains! (Stacks not included.) Cores required.

**OER XV17-500**



### Warrior Intake Kit

Improve air flow and performance with our high-flow air filter kit. Includes two K&N air filters and breather filters, sensor relocating bracket, instructions and Power Commander maps. Requires Power Commander. Right side scoop or velocity stack optional. **OER XV17-300**



### Road Star Billet Velocity Stack

Our billet aluminum velocity stack bolts securely to the cylinder heads and adds that mean look and intake roar that only a velocity stack offers. Fits both the Mikuni HSR carburetors as well as the stock carburetor. ....**OER XV16-STACK**



### Quick Turn Push-Pull Throttle Assembly

Aluminum bodied 1/4 turn assembly with cables.  
**MIK 3100-010**

### Pingel Fuel Filter

Super short billet aluminum in-line fuel filters offer high flow, high quality, and a cleanable bronze element.

- 5/16" Single In and Out **PIN SS1P**
- 5/16" Dual In and Out **PIN SS22P**



### Pingel Guzzler Fuel Valves

An outstanding performer designed for gasoline or methanol use, delivers up to 211 ounces of fuel per minute, 5/8" inlet.

- Single Outlet 5/16".....**PIN GV19G**
- Dual Outlet 5/16".....**PIN GV111G**
- Triple Outlet 5/16".....**PIN GV112G**
- Quad Outlet 5/16".....**PIN GV113G**

### Pingel Power-Flow Petcocks

Big bore kits, racing carburetors—high performance exhausts all require increased fuel flow. Stock petcocks will not do. These precision manufactured petcocks are available in 5/16" I.D. with single, dual, or triple outlets. A must with nitrous oxide racing carburetors and turbo-charger installations. Adapters are available for most current model stock fuel tanks.

- Single Outlet.....**PIN 6210-AH**
- Single Outlet with Reserve.....**PIN 6211-AH**
- Dual Outlet.....**PIN 3210-D-AH**
- Dual Outlet (GSXR).....**PIN 32GSXR-D-AH**
- Dual Outlet with Reserve.....**PIN 3211-D-AH**
- Triple Outlet.....**PIN 8210-D-AH**



### Push-Pull Throttle Assembly

This die-cast aluminum push-pull type throttle assembly is a mandatory addition to any 33mm, 34mm, 36mm, 38mm, 40mm smoothbore application. Because of precision slide fit on these MIKUNI smoothbore carburetors, slide return is delayed due to high vacuum. With the addition of this throttle assembly, slides are pulled shut for instant return to idle. Throttle assembly complete with cables.....**MIK 3100-005**